

# MONTHLY MEMBERSHIP PROGRESS REPORT

LOCATION INDIA

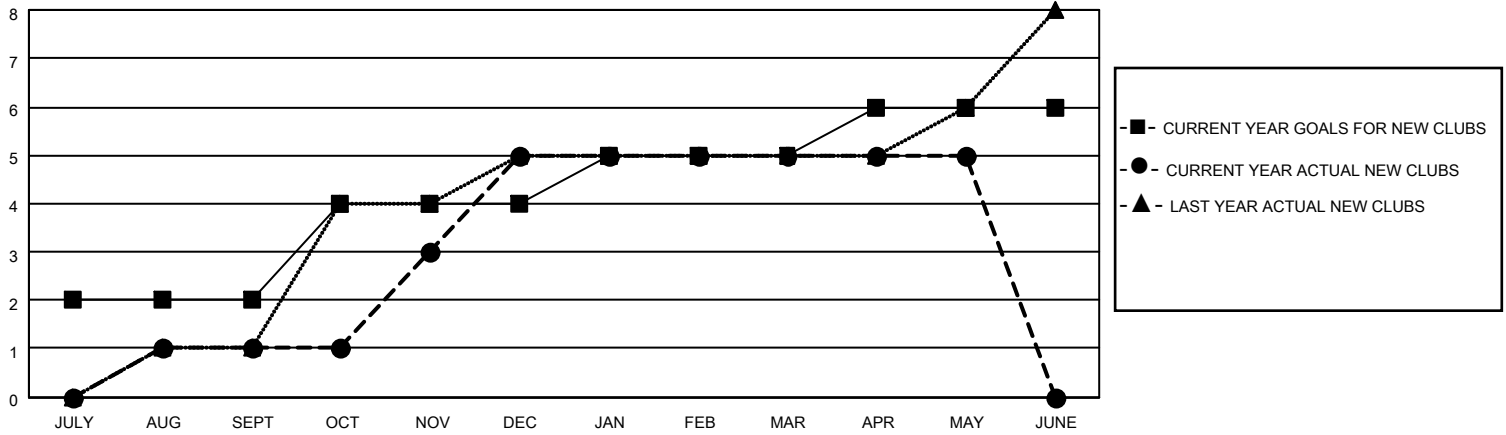
District 322 D

Results as of: 5/31/2021

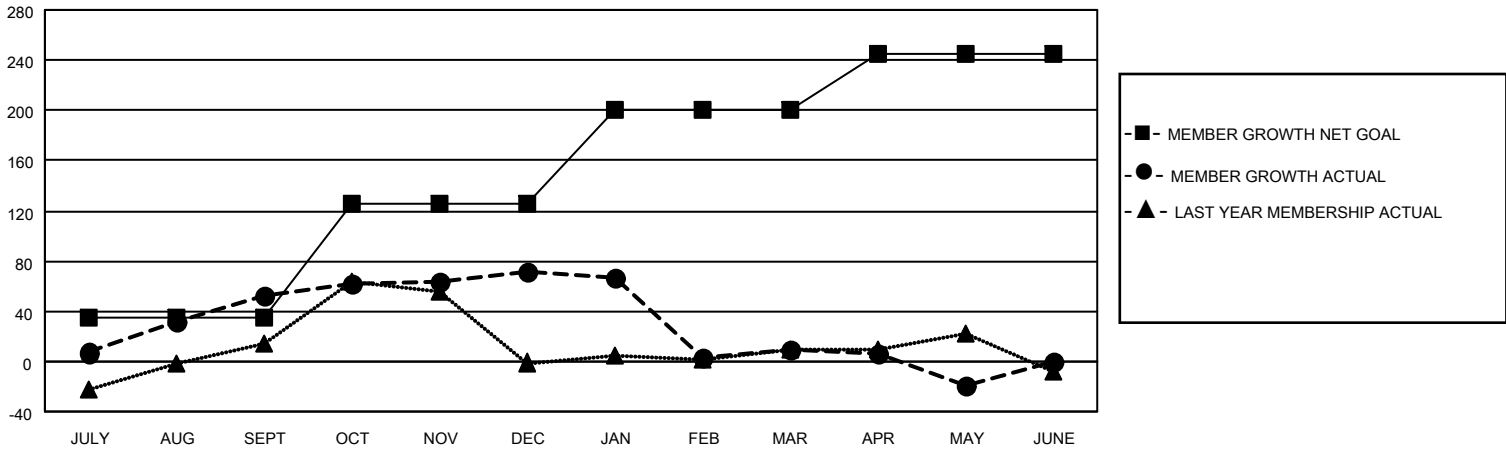
Clubs			
RESULTS FOR 2020-2021			
QUARTER	NEW CLUB GOAL	NEW CLUBS	DROPPED CLUBS
JULY/AUG/SEPT	2	1	1
OCT/NOV/DEC	2	4	0
JAN/FEB/MAR	1	0	3
APR/MAY/JUNE	1	0	0

Members			
RESULTS FOR 2020-2021			
QUARTER	MEMBER GROWTH NET GOAL	MEMBER GROWTH ACTUAL	DROPPED MEMBERS ACTUAL (including transfers)
JULY/AUG/SEPT	35	142	88
OCT/NOV/DEC	91	229	205
JAN/FEB/MAR	75	51	107
APR/MAY/JUNE	44	36	61

**GOALS AND ACTUAL NEW CLUBS CUMULATIVE**



**GOALS AND ACTUAL MEMBERS CUMULATIVE**



<b>DROPPED CLUBS: 4</b>	
<b>DROPPED MEMBERS</b>	
DECEASED	26
CLUB CANCELLED	79
OTHER	356
<b>TOTAL</b>	<b>461</b>

57 CLUBS OF 83 ADDED 1 OR MORE NEW MEMBERS

[CLICK HERE FOR CUMULATIVE MEMBERSHIP DATA](#)

<u>GENDER DISTRIBUTION</u>	
MALE	2,170 (71.85%)
FEMALE	850 (28.15%)

TOTAL FAMILY UNIT MEMBERS	1,141
FAMILY MEMBERS PAYING HALF DUES	627